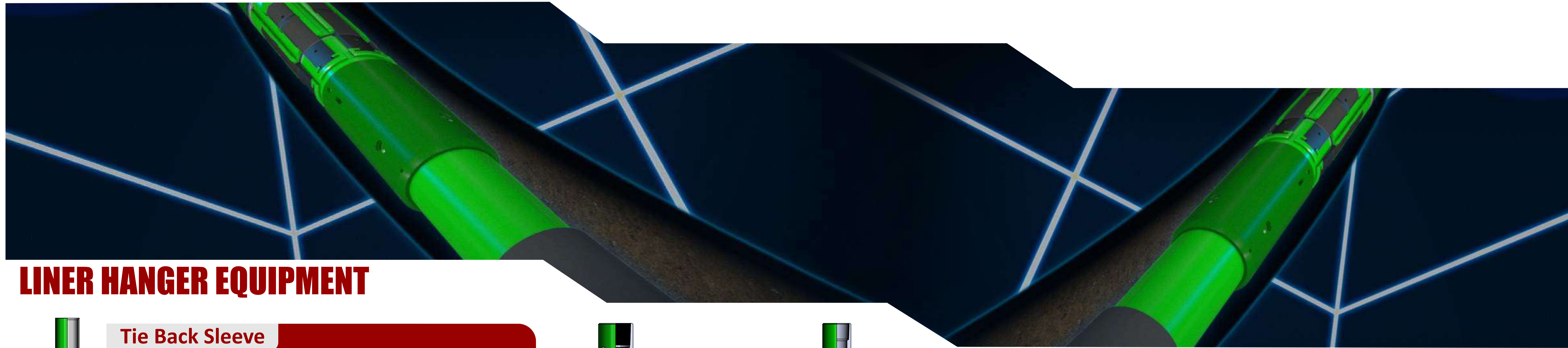
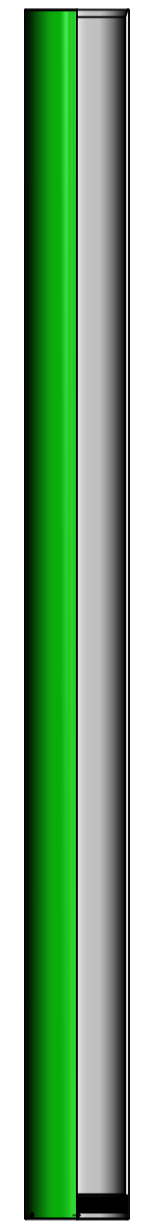


Liner Hanger Equipment & Reamer Shoe

Liner Hanger Equipment Saga group offers a wide range of field-proven and reliable liner hangers for virtually any application including geothermal and high temperature wells. We manufacture mechanical and hydraulic, rotatable and rotating liner hanger systems for vertical, horizontal and highly deviated wells. Our liner hangers can be supplied with a broad range of optional accessories including extended length tie back sleeves, integral and tie back packers and our proprietary reamer shoes. The quality, performance, and reliability of Saga's liner hangers make a critical difference in the success of any well completion.



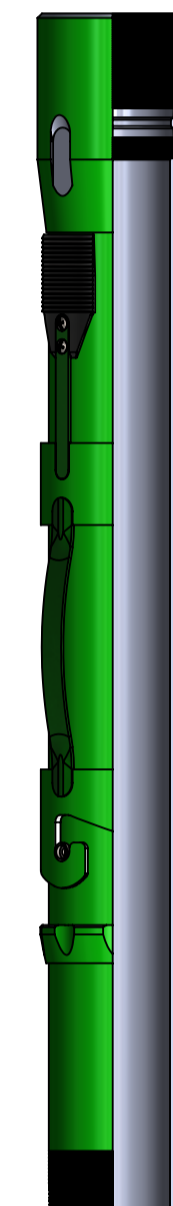
LINER HANGER EQUIPMENT



TYE

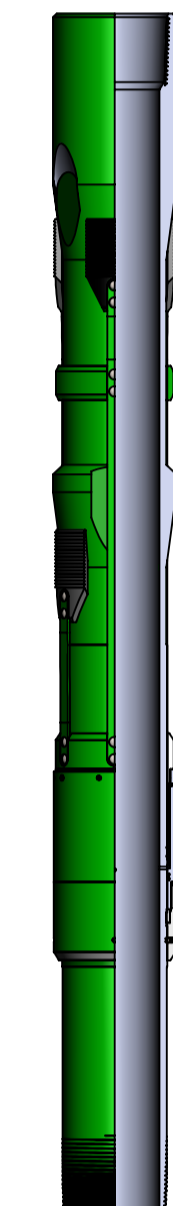
Tie Back Sleeve

TYE Tieback Sleeve can be used as a sleeve to transfer compression force from the running tools to set integral liner top packer that is run with the liner hanger assembly.



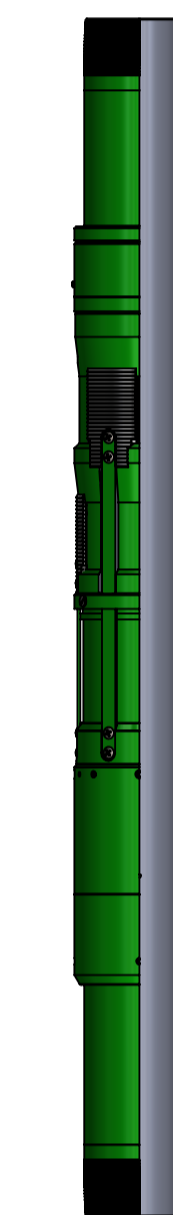
PPL

Mechanical Liner Hanger



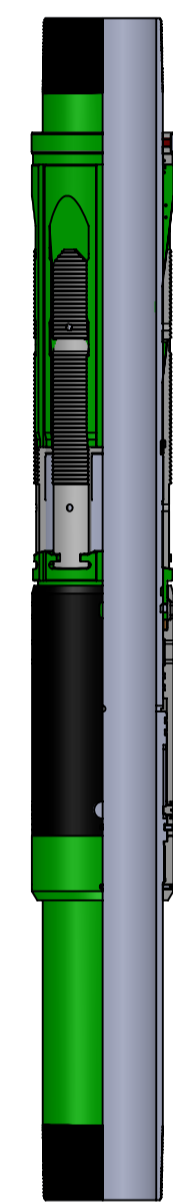
ZTC

Hydraulic Non-Rotatable Liner Hanger



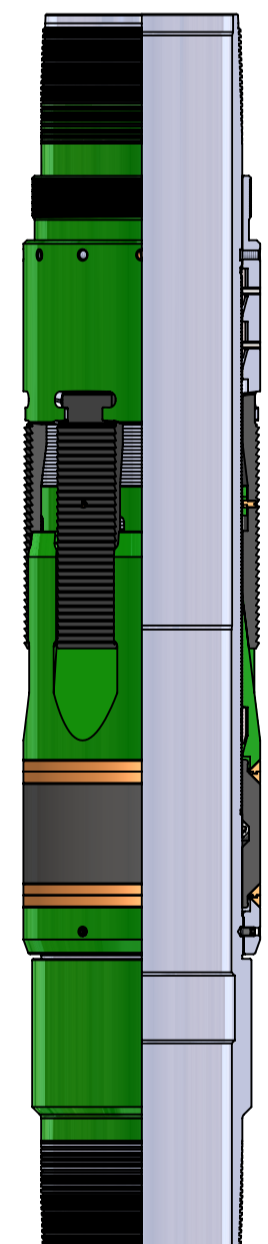
ZTR

Rotatable Hydraulic Liner Hanger

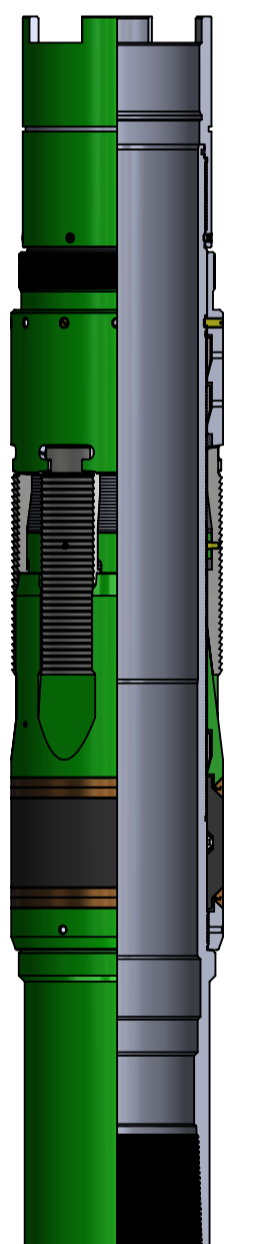


HRG

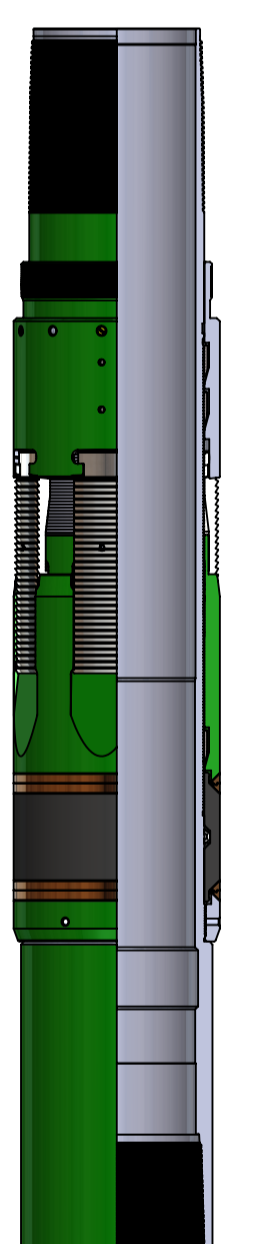
Rotating Hydraulic Liner Hanger



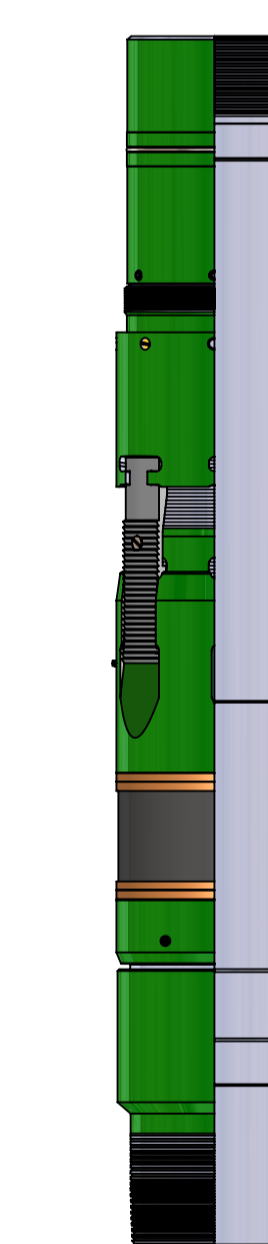
XPG



XPG1



XPG2



XPG3

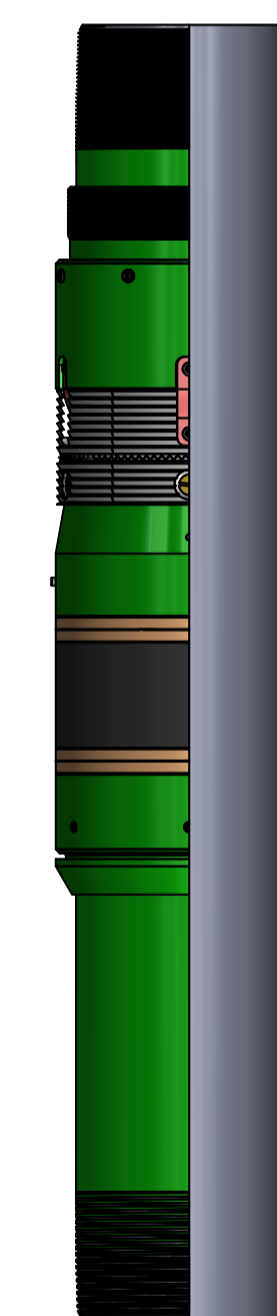
Liner Top Packer w/ Rocker Arm Slips

XPG, XPG1, XPG2, XPG3 liner top packer is a high performance packer that is suitable for most applications. All type XPG liner top packers compatible with all Sagatrade's liner hanger models.

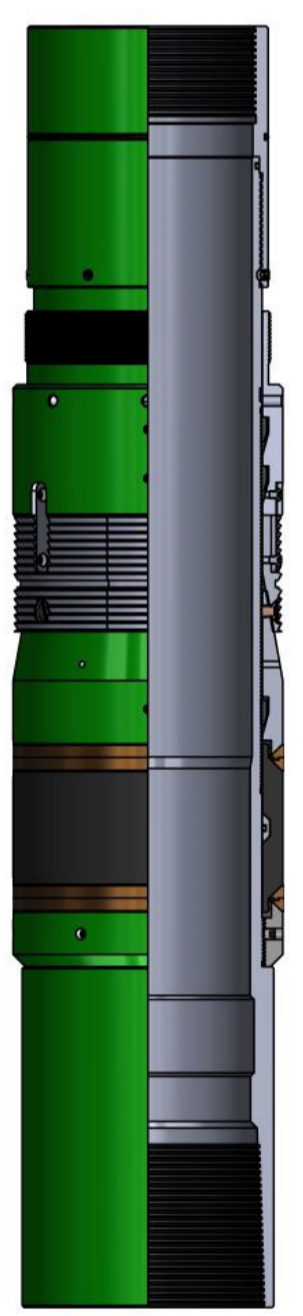
Liner Top Packer w/ Hold Down Slips

XPH & XPJ liner-top packer is a packer that is suitable for most applications and is set by applying downward force through the tie back sleeve.

The XPH generally run with sagatrade non-rotating type liner hangers. for XPJ generally run with non rotatable type liner hangers

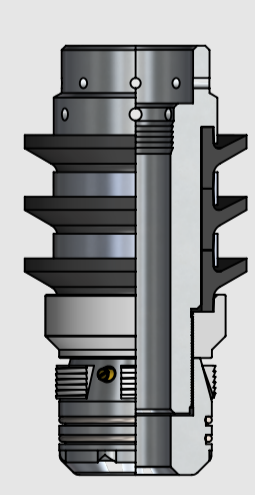


XPH

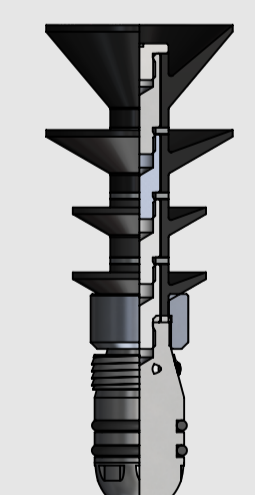


XPJ

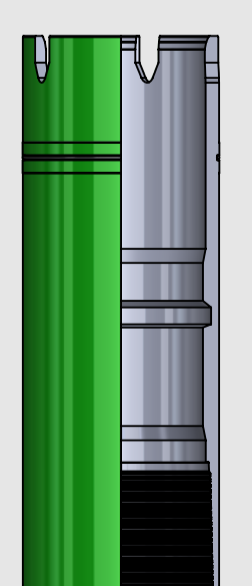
ACCESSORIES LINER HANGER



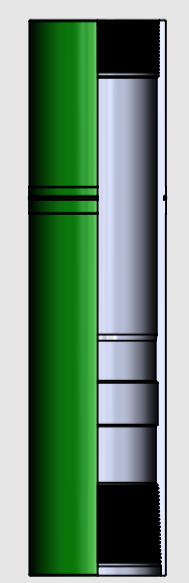
LWP



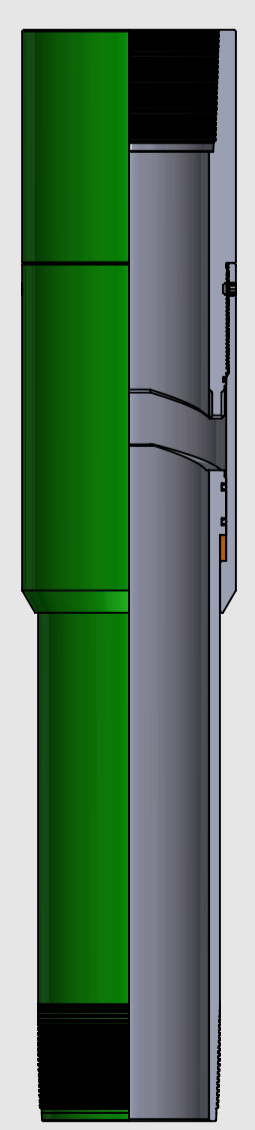
DWP



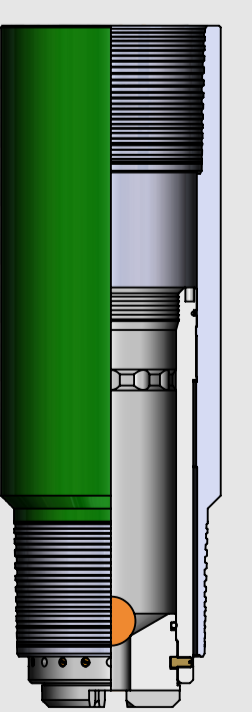
RPG



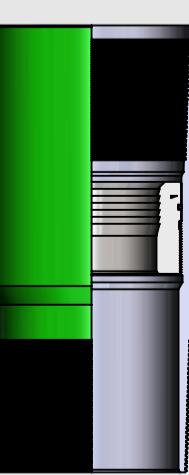
RPF



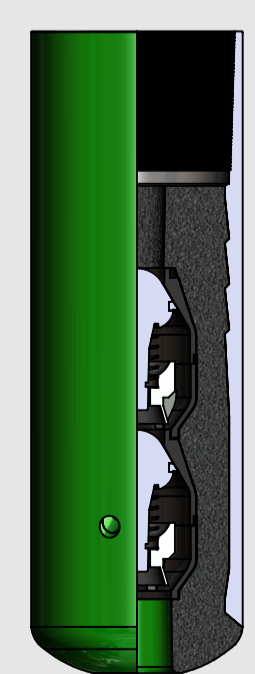
LWV



HLC



DLC



DFL

REAMER SHOE

DFR Double Valve Reamer Shoe has rounded aluminium eccentric nose to help guide the liner to the bottom. It is designed with down jet ports for and has the contingency ability to allow circulation through ports when liner is set on bottom. **DFR Double Valve Reamer Shoe's** are equipped with two plunger style check valves to prevent back flow and a screen plate on top of the concrete to catch landing collar seat and setting ball.

